



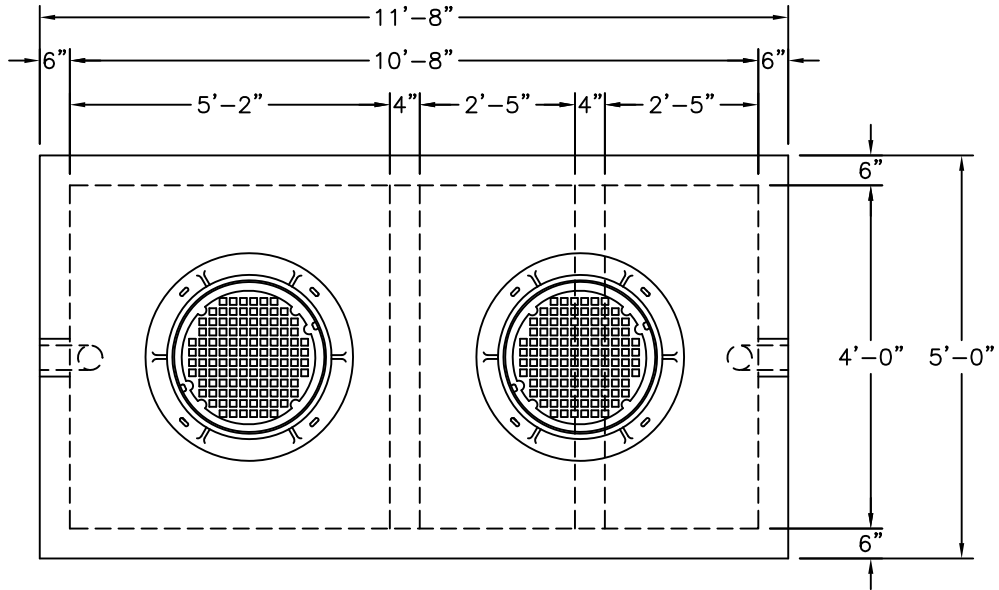
MONARCH

# MONARCH PRODUCTS COMPANY, INC.

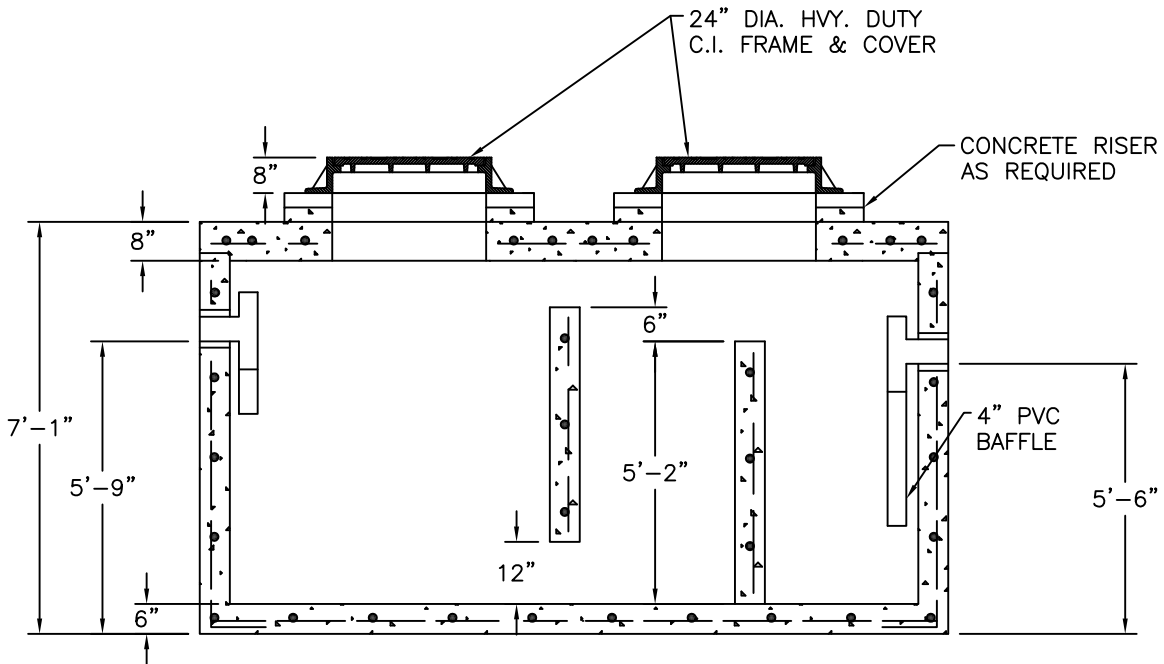
YORK HAVEN, PA.

NOTES:

1. H-20 TRAFFIC RATED FOR 1' TO 5' OF EARTH COVER.
2. CONCRETE TO BE 5000 PSI MIN. @ 28 DAYS.
3. REINFORCING STEEL TO BE PER ASTM A615, GRADE 60.
4. BOX WT. (W/BAFFLES)=19,400#, LID WT.=5,800#.



-PLAN-



-SECTION-

PRECAST CONCRETE 1500 GALLON  
COMMERCIAL GREASE INTERCEPTOR

GI-1500STD